

Introducing our **P Litter**



PAWPRINTS



Guide Dogs
SA/NT your eyes and ears

NEWSLETTER APRIL 2011 THE OFFICIAL NEWSLETTER OF GUIDE DOGS ASSOCIATION OF SA AND NT INC.

Message from our Chief Executive Officer

It's hard to believe that it's been a year since we moved back into our refurbished premises at Morphett Street – and it certainly has been quite a year for Guide Dogs SA.NT.

Our state-of-the-art premises marked a new era for the organisation offering enhanced client experience and service provision.

We are committed to promoting preventative health messages on vision and hearing loss through community education – with Australia's first interactive vision and hearing education centre playing a major role in this.

I'm proud to announce that our Discovery Centre has recently won a Design Institute of Australia's People Choice Award for Visual Communication.

This reinforces the positive feedback we have received from schools, community and corporate groups – with almost 2,000 visitors to the centre to date.

“The students came back to school buzzing with excitement about the excursion...Thanks again, I have highly recommended it to other teachers.”

Carole Cornish, Teacher, Belair Primary School

Contents

Boston therapy	PG 4
Your gift makes a big difference	PG 6
Puppy sponsors required	PG 8
Breaking down barriers	PG 10
Volunteers for life	PG 11
Meet the P Litter	PG 12
Finding his own way	PG 14
International White Cane Day	PG 16
Gala Evening	PG 17
Puppy Development Centre	PG 18
Pupparazzi	PG 22

But it's not just our facilities that deserve the accolades. It is the staff, programs offered and, more importantly, the clients that are helping us grow and proudly become a leader in the disability sector.

This first edition of Paw Prints for 2011 provides merely a snapshot of some of the achievements and milestones of the past year.

We'll introduce you to our latest litter – the P litter. We've already had 20 puppies in our breeding centre in the last 12 months and look forward to many more in the future.

The sessions around Managing Hearing Loss in the Workplace continue to be well received with inspirational stories like Leigh's on **page 10**.

Volunteers remain at the heart of our organisation, and on **page 11** you'll read about the work of Bob and Marie Pamment whom I had the honour of presenting Honorary Life Membership to in November.

And it's very exciting to report - that thanks to generous support - enough funding has been raised to begin work on stage one and two of the Puppy Development Centre – **pages 18 and 19**.

Without your support, we could not continue to develop and deliver the level of services and support to individuals living with a disability, so on behalf of Guide Dogs SA.NT I'd like to sincerely thank you.

2011 is already shaping up to be an exciting year full of opportunities and I look forward to sharing all of the latest news with you.



Kate Thiele
CEO, Guide Dogs SA.NT



Kate Thiele, CEO, with Sue Seekamp, Volunteer

Boston therapy

Many of us have experienced a career change in life – and that can also happen with Guide Dogs SA.NT’s puppies as well.

During training, the characteristics and temperament of our dogs can be identified as better suited for other roles like Autism Assistance Dogs or Pets As Therapy Dogs.

18-month-old Boston is the perfect example of this and is happily settling into his new home as a Pets As Therapy Dog.

A Pets As Therapy Dog improves the quality of life of someone living with a disability by providing assistance at a companion level.

The dogs are temperamentally sound with good obedience, social skills and training – having undergone a minimum of 12 months socialisation on our puppy raising program.

According to Guide Dogs SA.NT Puppy Raising Coordinator Suzi Drake, Boston is a laid-back boy displaying exceptional behaviour and manners.

“Boston has completed all of his training with excellence and his gentle nature includes an affinity for children.

“We’re fortunate to be in a position where we hear every day the difference this program makes to people’s lives - with the dogs acting as a constant companion and becoming an integral part of the family.”

For more information about the Pets As Therapy Program, contact Guide Dog Services P: (08) 8203 7372

Design a Dog

If you’re in the Northern Territory, keep an eye out for some old dogs that have been given a new lease on life...

As part of our Design-a-Dog campaign, schools were given an old Collection Dog to revamp and decorate in any way they choose.

Dogs will then be on show in the Territory’s largest shopping centre – Casuarina Shopping Centre during the month of April.

Shoppers can nominate their favourite by a coin donation and the school which raises the most amount of money will be given prizes.

For more information contact Helen Shih
NT Business Manager P: (08) 8995 2266
E: helen.shih@guidedogs.org.au

Guide Dog Charm



Purchase your sterling silver Guide Dog charm, handcrafted exclusively for Guide Dogs SA.NT by Scott Anthony, pureENVY Jewellery.

Cost is \$50 + P&H

To place your order contact Guide Dogs SA.NT - 1800 GUIDE DOGS or guidedogs.org.au





“Boston has completed all of his training with excellence and his gentle nature includes an affinity for children.”
Suzi Drake

Your gift makes a BIG difference

Thanks to your generous support, the response to our Christmas Appeal has been overwhelming.

We reached our target of \$100,000 to help raise and train the N Litter – the biggest litter we have had in South Australia - of 12 beautiful yellow and black Labradors.

The money raised from this campaign is now helping train these new puppies as Guide Dogs and Autism Assistance Dogs.

“Your donation to this Christmas Appeal means we will be able to provide more dogs for people with vision impairment and families of children living with autism,” Andrew Sabatino, Donor Development Manager, said.

“While many people are quite familiar with the Guide Dog Program, the Autism Assistance Dog Program is still relatively new.”

Autism has been described as a silent storm and is a lifelong disability. In South Australia alone, there are 50 children diagnosed with autism each month.

“Our Autism Assistance Dog Program changes the lives of families in three main ways.

“Safety to stop the child from bolting and getting into dangerous situations; comfort, when the dog intervenes

during meltdowns; and also inclusion allowing families to participate in social and leisure activities they would have never attempted without a Guide Dogs Autism Assistance Dog by their child’s side.

Six-year-old Riley has severe autism and was partnered with Autism Assistance Dog Blake.

His mum, Nicole, says that after one year with Blake the difference has been incredible – not just for Riley, but for the whole family.

“The biggest change is that we can leave the house for a walk without any stress or fear of danger. It’s such a relief to know he is safe,” Nicole said.

“The response to this campaign means we can now start the journey of partnering other children – who each have their own story – with a Guide Dogs Autism Assistance Dog,” Andrew said.

For more information or to contribute, contact Andrew Sabatino, Donor Development Manager SA.NT P: (08) 8203 8337 E: asabatino@guidedogs.org.au

Campaign update **Lachlan’s Story**

The response to this appeal has been truly incredible. We have been overwhelmed at the kindness and generosity of supporters.

All Lachlan’s family want for Christmas is a dog...





“The biggest change is that we can leave the house for a walk without any stress or fear of danger.”
Nicole

PUPPY SPONSORS REQUIRED

Puppy Sponsorship changes lives. And here's the proof. Over the past four years, \$275,000 has been raised as a result of individual Puppy Sponsorship – enough to raise, train and place 11 dogs with those in need.

Puppy Sponsorship is a vital way of helping us continue using our expertise in training dogs to improve the quality of life of those in need.

And did you know that not only individuals can become Puppy Sponsors but workplaces and organisations can also pitch in to sponsor their very own litter of pups?

By making a regular gift to Guide Dogs SA.NT you can help turn some of the cutest puppies into highly skilled, trained Guide Dogs or Autism Assistance Dogs.

You will share the hopes and challenges of puppies and instructors as they train for their new career – and you'll be helping people with impaired vision and children living with autism and their families to gain confidence and greater independence.

You will receive your puppies' birth certificate and we'll keep you informed of their progress with regular 'Pupdates'. Over the months, you'll develop a very special relationship with some very special dogs. And just think how proud you'll be when they graduate – thanks to your kind support.

Training of puppies starts almost immediately in the Puppy Development Centre before they enter the loving homes of volunteer Puppy Raisers at approximately 10 weeks.





Then, aged around 12 months, they come back to us as young dogs and begin intensive schooling. This is when we teach them all the complex skills they will need in the future – and when the pups choose their career – be it as a Guide Dog, Autism Assistance Dog or Pets as Therapy Dog.

It costs in excess of \$25,000 to raise and train just one Guide Dog or Autism Assistance Dog to the high standards needed to change someone's life.

That's why we need your help.

Contact Andrew Sabatino for more information.
P: (08) 8203 8337 E: asabatino@guidedogs.org.au

Become a Puppy Sponsor today

\$31.50 per month - Puppy Sponsor

Support the training of a whole litter of puppies

\$41.50 per month - Puppy Partner

Puppy Partners sponsor the training of puppies as well as additional Guide Dog Services

\$51.50 per month – Guide Dog Guardian

Guide Dog Guardians fund the training of puppies as well as supporting services throughout the whole Guide Dogs SA.NT organisation





Charyse May, Hearing Services Manager with Leigh Wallis, Hearing Services Client

Breaking down barriers

Leigh Wallis believes her life has changed “dramatically” after attending Guide Dogs SA.NT’s Managing Hearing Loss in the Workplace courses.

Leigh attended the sessions after finding that her hearing loss had advanced and it was affecting her performance in the workplace.

“I wanted to find a way to be taken seriously professionally, socially, and as a person. I also wanted to grow as a person, not someone with a disability.”

Leigh Wallis

Hearing Services Manager Charyse May said the courses are designed to identify communication difficulties specific to the workplace.

“We then develop tactics and strategies to overcome these difficulties and provide advice on practical methods and tools that people can use.

“The courses are designed for people to arm themselves with the knowledge, equipment and support to manage their hearing loss in the workplace – it doesn’t have to be a disadvantage,” Charyse said.

“Guide Dogs SA.NT helped me gain the confidence to openly discuss the hearing issues I have with my colleagues and manager which has proven to be invaluable when there is a concern. In the past I would have just dismissed this and moved on,” Leigh said.

“I have been climbing a hill for many years now and could never quite reach the top - I kept stumbling along the way. But now I can see it and know it’s within reach.”

If you would like any information on these courses, or interested in attending, please contact Charyse May, Hearing Services Manager P: (08) 8203 8360 or E: cmay@guidedogs.org.au



“It’s a great feeling to know that some people listen to us and realise that they can also achieve a good lifestyle even if they have a disability of some kind.”

Bob Pamment

Kate Thiele, CEO, Bob and Marie Pamment, and Deputy Chairman Bruce Ind

Volunteers for life

At the heart of Guide Dogs SA.NT is the work of volunteers like Bob and Marie Pamment. Involved with the organisation for more than two decades – they have a history and association that would be hard to rival. In recognition of this commitment, they have just received Honorary Life Membership

In 1988, Bob was partnered with his first Guide Dog, Gillan, and has been involved not only as a client and volunteer – at the grassroots of the organisation – but has only recently retired from the Board. He remains actively involved in community talks raising awareness of the work and services of Guide Dogs SA.NT.

Through all of this Marie has been by Bob’s side the entire time – driving him to events and offering her unwavering support – and has also asserted her own presence in the organisation.

For a number of years, Marie committed her time and energy to volunteering as a puppy raiser. One of these, was a pup called ‘Hero’ - and as fate would have it, ‘Hero’ was found to be a perfect match for Bob and is his current Guide Dog and a permanent member of their family. Marie said that’s been her best experience by far at Guide Dogs SA.NT.

Most recently, Bob and Marie are familiar faces in the Discovery Centre where they spend their time assisting with guided tours for schoolchildren – providing education about hearing, vision and Guide Dog etiquette.

If you’re interested in becoming a volunteer, contact Meg Matthews, Volunteer and Discovery Centre Coordinator. P: (08) 8203 8324 E: mmatthews@guidedogs.org.au

Meet the P Litter

Date of Birth: 30.10.10

Place of Birth: Adelaide, South Australia

Breed: Labrador

Gender: 3 males and 2 females

Parents: Ulani and Norton



MALE

Percy

Happy and relaxed, but inquisitive! Little Mr Explorer, likes playing and finding new things in the garden.



FEMALE

Piper

The 'tomboy'! The strongest girl in the litter – highly intelligent but very playful with a strong will.

Competition Entry

Please fill out your personal details below, along with your 20 word response on the reverse and return to Guide Dogs SA.NT in the reply paid envelope supplied.

Mr Mrs Miss Ms

Name

Address

Postcode

Daytime Phone

Email

I would like to receive information about

- Becoming a puppy sponsor
- Becoming a puppy raiser
- Leaving a bequest to Guide Dogs SA.NT
- Services provided by Guide Dogs SA.NT
- Discovery Centre

I would like to sign up to the following E-Newsletters (provide email address above)

- Client Services
- Professional/Referral News
- Volunteer News
- All things Guide Dogs SA.NT



Preston

MALE

Affectionate in nature and eager to please – this is the quiet achiever in the group.



Polly

FEMALE

Polly is the gentle soul, with a lovely nature and always happy to share and wait her turn.



Paddy

MALE

A quick learner and very affectionate – already close to mastering toilet training!



“It’s really important that we continue providing programs like the annual Life Skills Camp which play their role in improving the quality of life of these kids.”

Adrian Reissen



Vice Chancellor Professor James McWha, Adelaide University, with Belynda Harvey, Cadet Guide Dog Mobility Instructor

Rain, hail or shine for International White Cane Day

Adelaide University VIPs were on hand to help Guide Dogs SA.NT celebrate International White Cane Day.

A morning of activities was held at Adelaide University last October to raise awareness of the access needs of people living with a vision impairment.

The Chancellor, Hon John von Doussa QC, and Vice Chancellor, Professor James McWha, of Adelaide University braved the less than ideal conditions and were led blindfolded through a maze of everyday obstacles with a white cane by Guide Dogs SA.NT instructors.

“White Cane Day is a fantastic opportunity to educate the community on how people living with a vision impairment can safely and independently navigate their way around the city,” Garry Peschel, Manager of Vision and Sensory Services said.

“It also demonstrates how these challenges can be overcome with the assistance and support of mobility services at Guide Dogs SA.NT.

“It’s important to keep in mind that sighted people can help by reading signs within shops and at bus stops for the vision impaired, keeping footpaths clear from obstacles and cutting overhanging branches,” Garry said.

If you or anyone you know would like more information about Guide Dogs SA.NT’s Vision Services, please contact Guide Dogs SA.NT P: (08) 8203 8333.

You are invited to our gala evening



A night that promises to be one of discovery, so bring your friends and colleagues for the experience of a lifetime. During the evening your senses will be your guide. Cruise away on the SS Guide Dogs for a sensory journey through sound, sight, smell, taste and touch.

Saturday 30 July 2011
Adelaide Entertainment Centre

Tickets @ \$180 per person

**Includes dinner, beverages
and entertainment.**

The evening will be the largest and most important fundraising event for Guide Dogs SA.NT in 2011, raising much needed funds to improve the quality of life of individuals and their families living with a disability.

To book a table or find out more contact
Christina Angus, Events and Partnerships
P: 8203 8309 E: cangus@guidedogs.org.au

VOLUNTEERS REQUIRED



Suspect you or someone you know has a hearing loss?

We are looking for people to participate in our FREE Hearing Clinic Trial. What's involved: 45-minute hearing assessment, a 2-hour Rehabilitation/Information Session, a feedback questionnaire.

If you would like to find out more visit guidedogs.org.au or contact Anastasia Mouratidis, Hearing Services
P: (08) 8203 8390
E: volunteer@guidedogs.org.au

Puppies benefit from your generosity

Late last year, an emergency appeal was launched to help raise funds for our Puppy Development Centre.

There are three stages to the project - and with more than \$75,000 raised – we can now begin work on stages one and two of the Centre.

Jane Monk, Corporate Services Manager said the Puppy Development Centre has been designed to simulate real life in a safe environment for the puppies to enhance their training.

“Essentially we’re transforming a barren outdoor wasteland with uneven rock surfaces and makeshift fences into a specialised training environment.

“Puppies need to experience different sounds and sights and smells as early as possible. From a young age they need to be exposed to different scenarios – they need a variety of experiences – things that wobble and make noises, different heights and surfaces under their paws.

“It’s vital that our puppies get the best possible start in life – they need to be given every chance to go on and become Guide Dogs, Autism Assistance Dogs or Pets as Therapy Dogs –

dogs who will provide independence, safety and support,” Jane said.

Thank you to everyone who gave so generously.

It’s thanks to your kind gifts we are now able to break ground!

Now we are working towards:

- Development of courtyard training area.
- Construction will include paving and kerbing, landscaping and decking, power lighting, installation of feature wall.
- Raising funds to purchase outdoor furniture and items for training.

Funding required to complete the project = \$115,000.

“We still have a way to go but this gives us a solid start to get the project up and running,” Jane said.

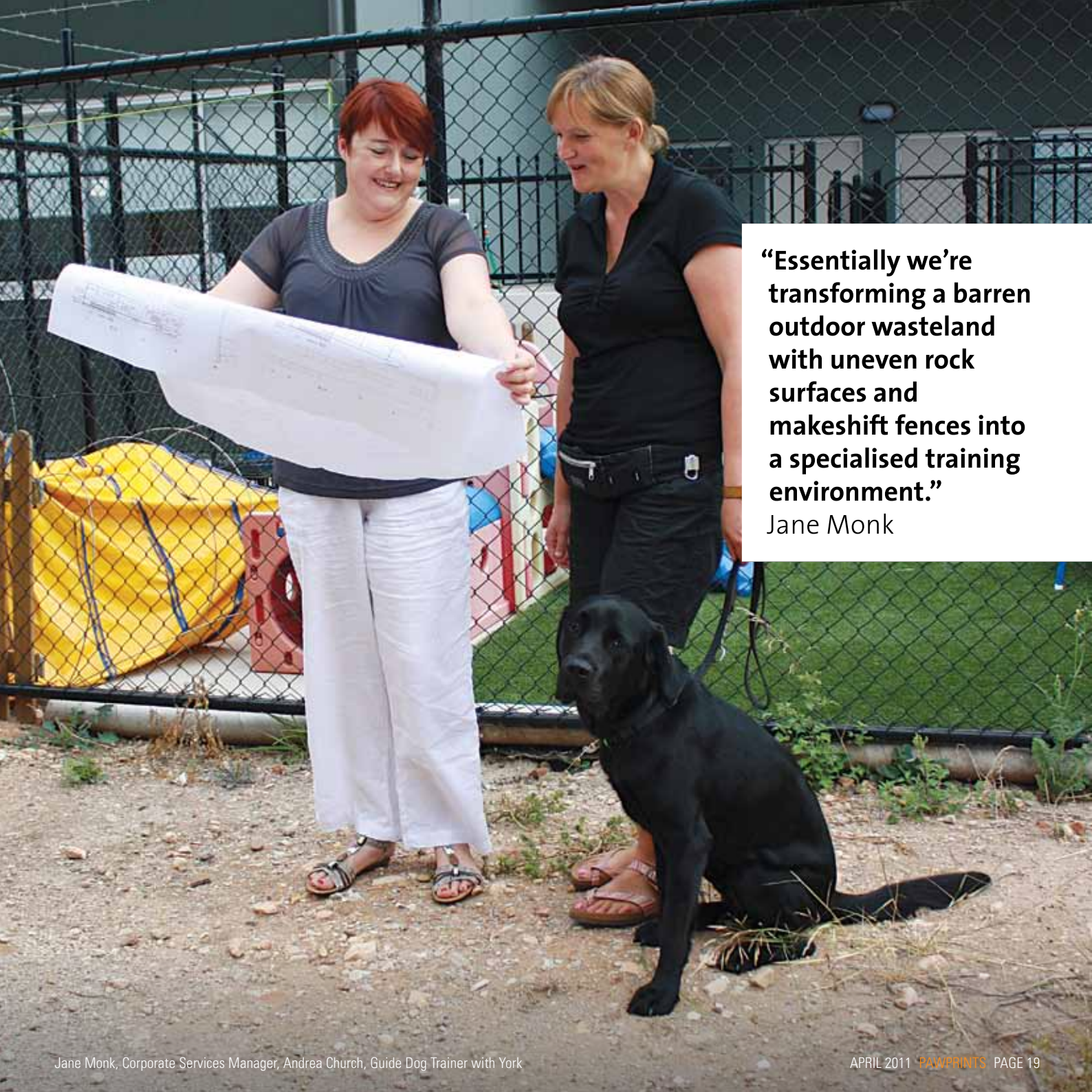
For more information or to contribute, contact Marta Harbuzinska, Fundraising Manager SA.NT
P: (08) 8203 8302 E: marta@guidedogs.org.au

A lasting gift

One way to show your support for Guide Dogs SA.NT is to leave a lasting legacy in the form of a bequest. More than 75% of our income is from bequests - our state-of-the-art refurbishment at Morphett Street was largely funded due to this generosity. If you are considering a bequest to the organisation, please let us know. Any support that you can provide is invaluable.

For more information about bequests, contact Marta Harbuzinska, Fundraising Manager SA.NT.
P: (08) 8203 8302 E: marta@guidedogs.org.au





“Essentially we’re transforming a barren outdoor wasteland with uneven rock surfaces and makeshift fences into a specialised training environment.”

Jane Monk

Guide Dogs SA.NT proudly supports Autism SA's 2011 State Conference – 'Pathways'

Date: 28 - 29 April 2011

Venue: Adelaide Convention Centre

Guide Dogs SA.NT will be proudly exhibiting our Autism Assistance Dog Program on the 28th & 29th April at the Adelaide Convention Centre. Highly trained staff will be on hand to talk about how this program can help improve the quality of life for families living with a child with autism.

Entertainment Book

Purchase your brand new 2011-2012 Entertainment Book to receive over \$15,000 in valuable offers, valid through 1 June 2012. \$13 from every Book sold will be donated to Guide Dogs SA.NT.

Cost \$65.00 To purchase your new Entertainment Book, please call Catherine Novikov
P: (08) 8203 8312 E: cnovikov@guidedogs.org.au

Blind Sporting Council

The Blind Sporting Council provides funding opportunities, support and promotion for blind or vision impaired people, enabling them to participate in the sport, recreation or community activity of their choice.

Guide Dogs SA.NT thanks the Blind Sporting Council for their ongoing support – and a recent donation towards a recreational Fishing Group for clients with a sensory disability. blindsport.com.au

Competition time!

Tell us in 20 words why you **Suppawt** Guide Dogs SA.NT to win an exclusive shirt.

Put your entry on the provided form (on page 13), or write to us on [facebook.com/GuideDogsSANT](https://www.facebook.com/GuideDogsSANT) before Monday 9th May. Winners will be contacted by telephone.



Thank you for supporting us

National Partners

coles

Deloitte.



 **Kimberly-Clark** Australia Pty. Limited



Major Partners



SALMONSTUDIO
.COM.AU



Patrons

SA: His Excellency, Rear Admiral Kevin Scarce AC CSC RANR, Governor of South Australia.

NT: His Honour, Mr Tom Pauling AO QC, Administrator of the Northern Territory.

Ambassadors

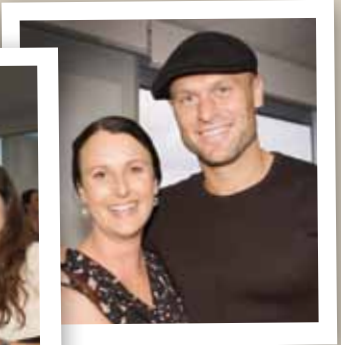
Keith Conlon, Chad and Kane Cornes, Troy Gray, Daniel Mullen, Tim Noonan, Bianca Reddy, Brenton Ragless.

Sponsors and supporters

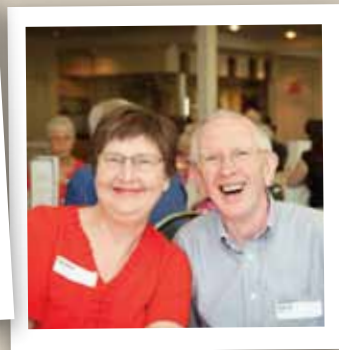
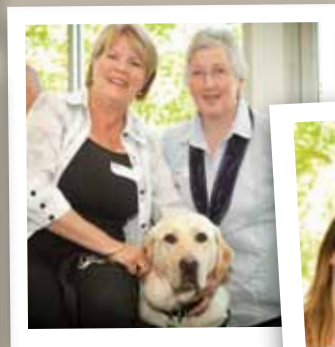
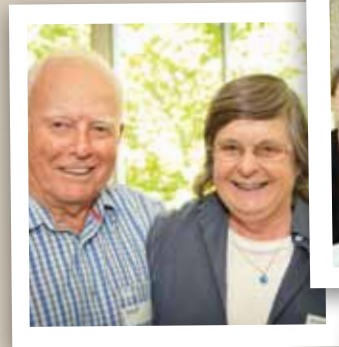
- Bank SA and Staff Charitable Fund
- Bridgehead Australia Pty Ltd
- National Foods Australia Pty Ltd
- Post Haste
- SlingShot Studios
- Taxi Council SA
- Tony Milhinhos and Family
- Torbreck Vintners
- Mt Gambier Ladies' Auxillary
- Burnside Symphony Orchestra
- Metropolitan Male Choir
- A Touch of Beauty
- James Gibbs Investments
- Brendan Murray
- Bridge Office National
- Australian Army Band (Adelaide)
- Wigg and Son
- Baker Young Stockbrokers Ltd
- MAP Financial Strategies
- IOCANE
- TOLL Priority
- Dog City Daycare
- pureENVY
- Gerard Corporation and staff
- Land SA
- Pets Paradise
- Senior Citizens Club of Seaton
- ERA Mining
- Skycity Darwin
- Commonwealth Bank

Pupparazzi

Supporter Drinks

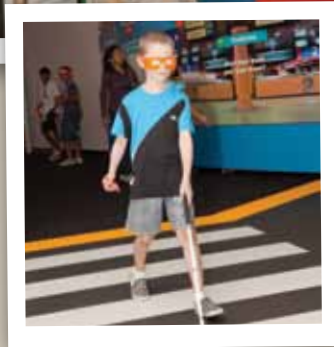


Volunteers Lunch



Pupparazzi

Discovery Centre Open Day



Did you know?

Over 480,000 Australians are visually impaired in both eyes. Over half of those who present with a vision impairment could have their vision improved with the correct glasses. Early diagnosis and treatment are important to control glaucoma and protect sight. Hearing loss is projected to increase to one in every four Australians by 2050. Of those people with a hearing loss, only 20% own a hearing aid and of those that own a hearing aid, only 38% regularly use their aids. On average, people delay seeking assistance for their hearing loss for six years.

Diary Dates

Autism Awareness Month April

Burnside Symphony Orchestra Concert Wednesday, 6 April 2011
8pm-10pm @ Performing Arts Centre Prince Alfred College

Paws Parade Tuesday, 19 April

Anything Goes Gala Dinner
Saturday, 30 July

I would like to donate to Guide Dogs SA.NT

Please enclose this coupon with your cheque, money order or credit card details and post to:
Guide Dogs SA.NT
251 Morphett Street, Adelaide SA 5000

Mr Mrs Miss Ms

Name

Address

Postcode

Daytime Phone

DOB / /

Email

\$25 \$35 \$50 \$100
 \$500 \$_____ my choice

Payment Details Please make cheques payable to Guide Dogs SA.NT.

Cheque/Money Order is enclosed OR

charge the above amount to:

VISA MASTERCARD AMEX DINERS

CARD NO.

NAME ON CARD

EXPIRY DATE

SIGNATURE

Guide Dogs SA.NT respects your privacy and has embraced the National Privacy Principles. If you do not wish to receive any further mail, please tick the box.

Your spare change can help provide a Guide Dog

How your \$20.85 a month can help provide a Guide Dog

\$2.10	towards purchasing the puppy
\$5.00	towards puppy raising, vets costs, equipment
\$6.65	for vital daily one-to-one Guide Dog training and advanced vet costs
\$5.00	for matching the Guide Dog with the client in a four week live-in program
\$2.10	for the intensive post-matching follow up care

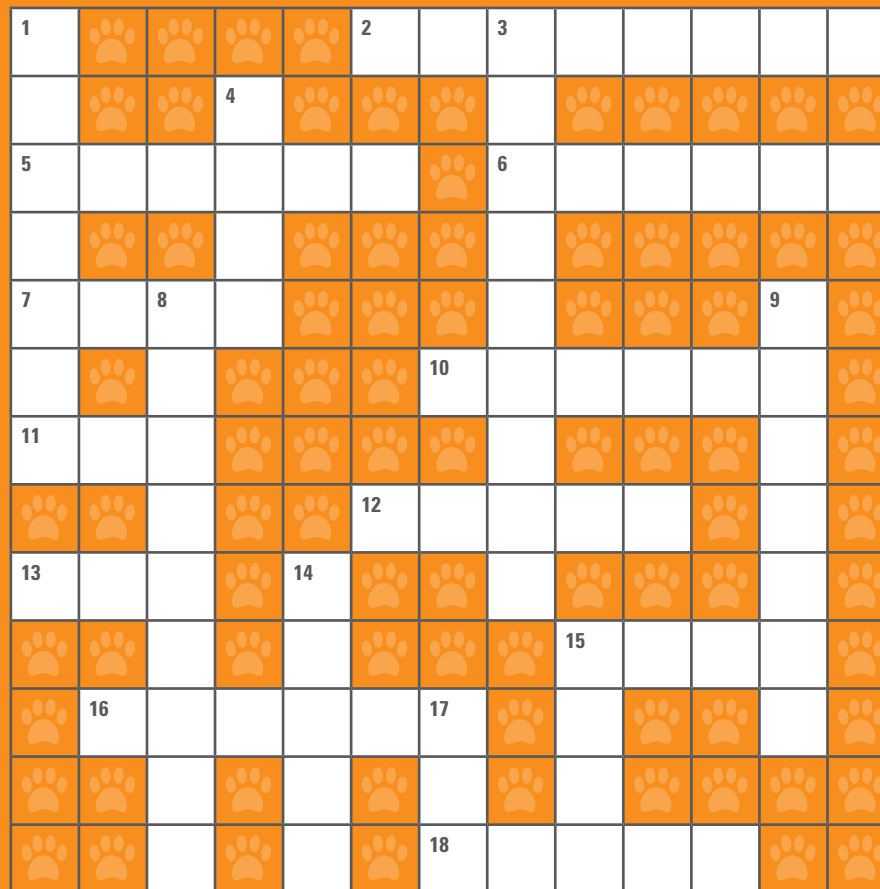
- I'd like to give **\$20.85** a month
- I'd like to give my amount of \$ _____ a month.

Your regular gift helps Guide Dogs SA.NT plan ahead, ensuring continuity of services and support for clients.

Thank you for supporting Guide Dogs SA.NT.

PTO

All donations of \$2 or more are tax deductible.



Answers will be revealed on Facebook and in the next edition of Paw Prints.

Crossword

DOWN

- Another service offered at Guide Dogs SA.NT
- What is the symbol for hearing?
- Our Morphett St office is located where?
- Name of our interactive education centre
- A lasting legacy of support (see page 18)
- Our PR dog extraordinaire
- Our new puppy development centre will have nice green...
- Enter the competition on page 20 and you could...

ACROSS

- Guide Dogs increase a person's what?
- The month of April will raise awareness of this
- How many puppies were in the N Litter?
- One of the dogs in the Puppy Love program
- The colour you would most associate with Guide Dogs SA.NT
- Acronym for Guide Dog Services
- One of the puppies from the P Litter
- One place Guide Dogs don't have legal access
- We help manage hearing & vision...
- What colour coat will you see one of our Guide Dogs wearing
- Name of the black N litter pup featured on page 9.



Join us on Facebook under Guide Dogs SA.NT



Follow us on twitter @GuideDogsSANT

Paw Prints is available, upon request, in other formats: Audio CD or large text. PDF and Word versions are posted on our website. If you do not wish to receive any further mail from Guide Dogs SA.NT please contact us on 1800 484 333 (free call).



Guide Dogs
SA.NT your eyes and ears

251 Morphett Street
Adelaide SA 5000
Tel (08) 8203 8333
Fax (08) 8203 8332

TTY (08) 8203 8391
Toll Free 1800 484 333
info@guidedogs.org.au
guidedogs.org.au